

## IMAGINE. CREATE. ACHIEVE.

*a sustainable future*

Egis is an international player active in the consulting, construction engineering and mobility service sectors. We design and operate intelligent infrastructure and buildings capable of responding to the climate emergency and helping to achieve more balanced, sustainable and resilient territorial development.

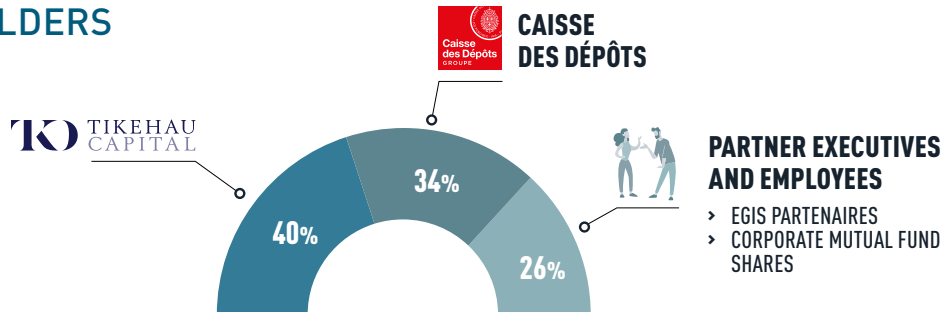
With operations in 120 countries, Egis places the expertise of its 16,200 employees at the disposal of its clients and develops cutting-edge innovation accessible to all projects. Through its wide-ranging fields of activity, Egis is a central player in the collective organisation of society and the living environment of citizens all over the world.

**€1.16**  
BILLION  
TURNOVER IN 2021

**16,200**  
EMPLOYEES  
IN THE WORLD

**79%** Consulting and engineering  
**21%** Operation and mobility services

### SHAREHOLDERS

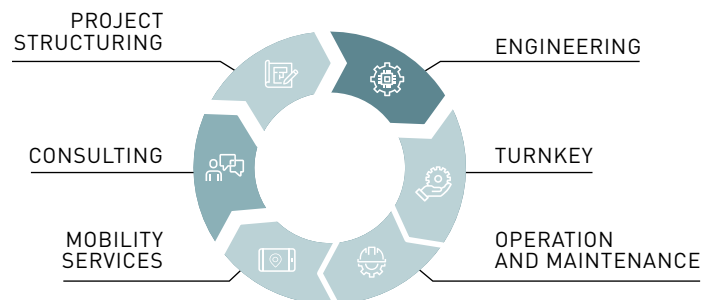


### OUR GLOBAL OFFER

#### OUR FIELDS OF ACTIVITY

TRANSPORT					
SUSTAINABLE CITIES					
WATER AND ENERGY					

### OUR SERVICES ALONG THE ENTIRE VALUE CHAIN OF PROJECTS



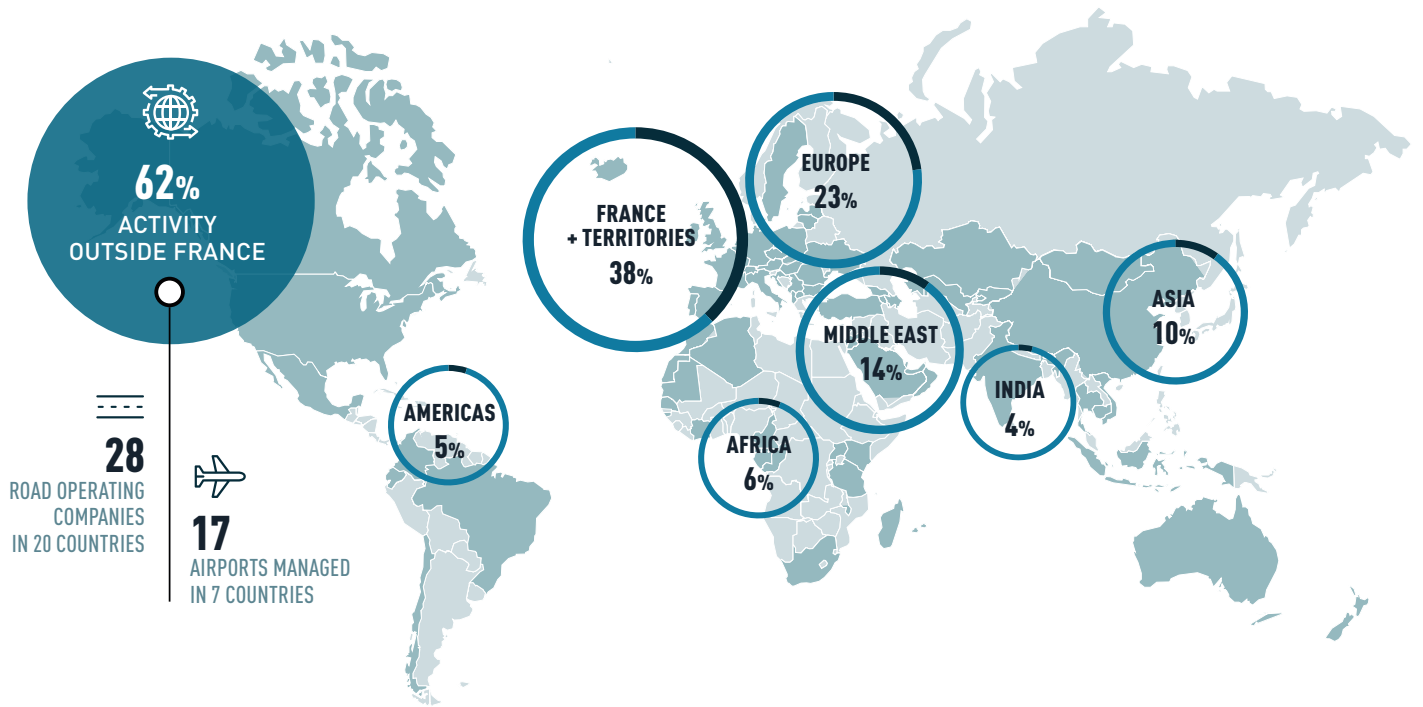
### OUR CROSS-GROUP AREAS OF EXPERTISE

ENVIRONMENT • MOBILITY AND SYSTEMS • GEOTECHNICAL AND COMPLEX STRUCTURES • DIGITAL

# OUR ACTIVITY

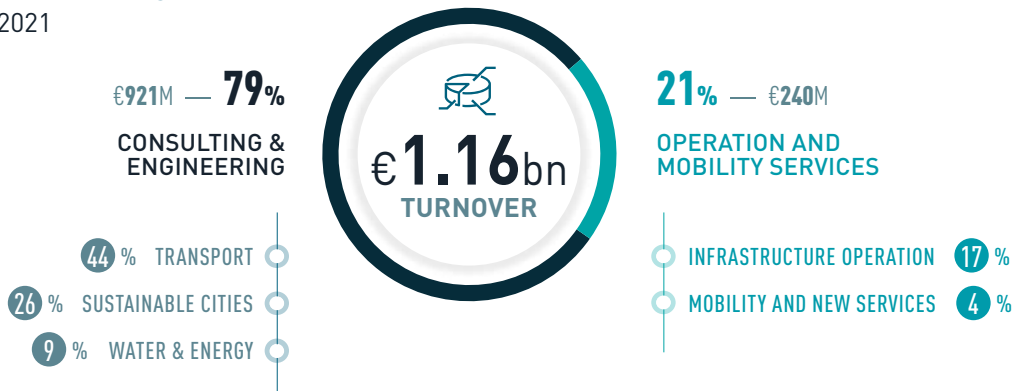
## BREAKDOWN BY GEOGRAPHICAL ZONE

of turnover in 2021



## BREAKDOWN BY ACTIVITY

of turnover in 2021



## A COMPANY THAT IS...

### PEOPLE-FIRST

Developing the careers and skills of its employees.

### CREATIVE

Taking a proactive stance on innovation to meet tomorrow's challenges.

### RESPONSIBLE

Incorporating the issues of sustainability and ethics within projects and towards our stakeholders.

[www.egis-group.com](http://www.egis-group.com)

Follow Egis on:



Egis  
15, avenue du Centre  
CS 20538 - Guyancourt  
78286 Saint-Quentin-en-Yvelines Cedex  
France

